

## South Sound Economy

Ali Modarres  
Director of Urban Studies  
University of Washington Tacoma

---

---

---

---

---

---

---

## Overview of Pierce County

- 2017 Estimated Population = 869,920
- Grew by 58,240 over the last five years (7.2% growth)
- Projected to grow by 44,390 over the next five years (5.1% growth)
  
- 369,160 jobs in 2017
- Jobs grew by 27,080 over the last five years (7.9% increase)
- Projected to grow by 30,840 over the next five years
- Labor force participation grew from 60.9% to 61.6% over the last five years
  
- 2016 Median Household Income = \$61.5K, which was above the national median income of \$55.3K.

---

---

---

---

---

---

---

## National Comparison

- At 192,400, Pierce County has slightly larger millennial population (20-34) than the national average for an area this size
- At 115,083, Pierce County has slightly less retiring age population than the national average for an area this size
- Our racial diversity is relative low compared to the national average for an area this size.
- Pierce county is home to a much larger veteran population than the national average for an area this size.

---

---

---

---

---

---

---

Overview of Pierce County

	Population	Labor Force (2017)	Jobs(2017)	Cost of Living	GRP (B)	Imports (B)	Exports (B)
Pierce County	869,918	429,251	369,155	116.0	\$41.92	\$51.55	\$55.02
State	7,366,582	3,735,833	3,702,707	112.1	\$478.31	\$345.76	\$471.19
Share (%)	11.8	11.5	10.0	103.5	8.8	14.9	11.7

---

---

---

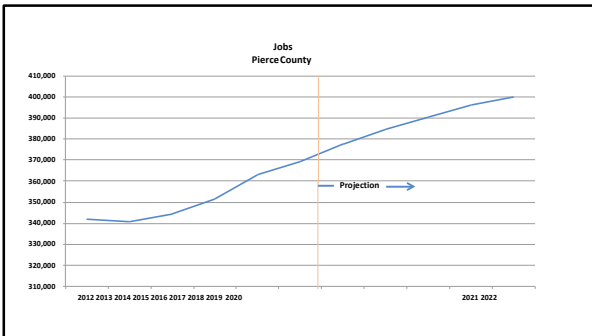
---

---

---

---

---




---

---

---

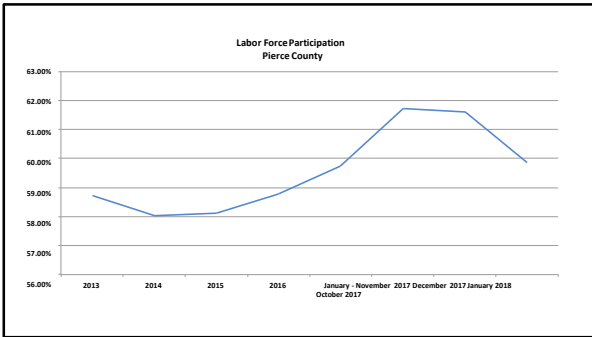
---

---

---

---

---




---

---

---

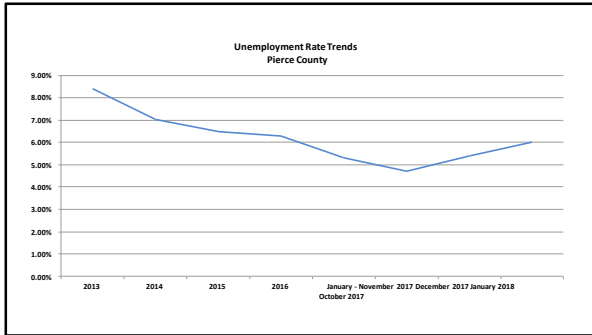
---

---

---

---

---




---

---

---

---

---

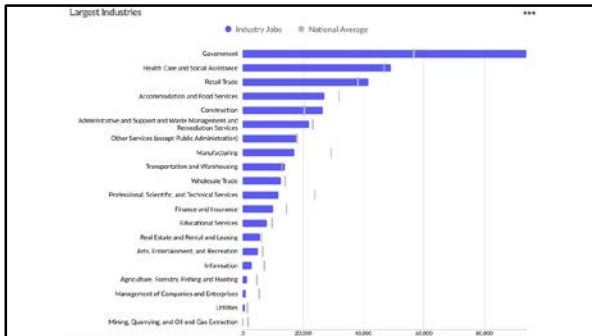
---

---

---

---

---




---

---

---

---

---

---

---

---

---

---




---

---

---

---

---

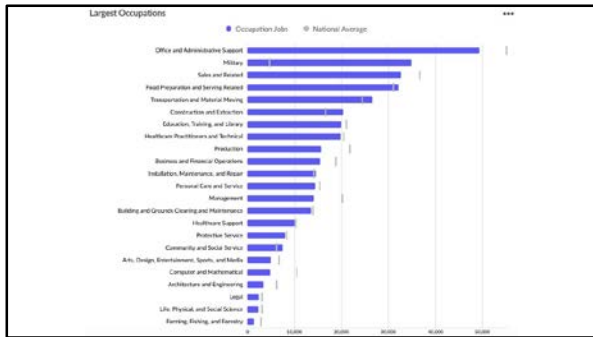
---

---

---

---

---




---

---

---

---

---

---

---

---

---

---

### Industry Cluster

- Assumptions regarding importance:
  - Growth and Regional Specialization – Medium
  - Earnings, GRP, and Regional Competitiveness - High
- Top Clusters:
  - Federal Government Services
  - Distribution and Electronic Commerce
  - Oil and Gas Production and Transportation
  - Local Government Services
  - Water Transportation
  - Local Education and Training

---

---

---

---

---

---

---

---

---

---

### Industry Cluster

- Assumptions regarding importance:
  - Growth and Regional Specialization – High
  - Earnings, GRP, and Regional Competitiveness - Medium
- Top Clusters:
  - Water Transportation
  - Distribution and Electronic Commerce
  - Automotive
  - Federal Government Services
  - Food Processing and Manufacturing
  - Aerospace Vehicle and Defense

---

---

---

---

---

---

---

---

---

---

Couple of Interesting Issues

---

---

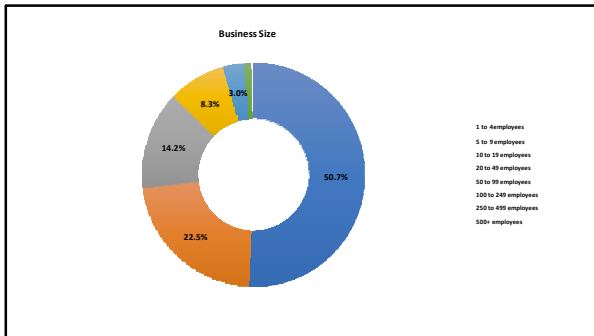
---

---

---

---

---



---

---

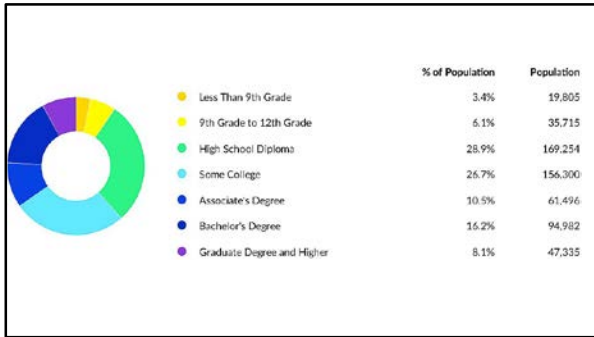
---

---

---

---

---



---

---

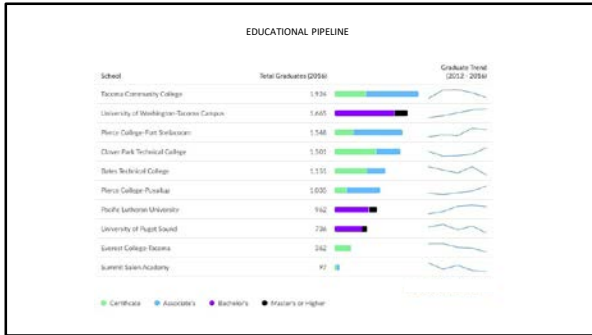
---

---

---

---

---




---

---

---

---

---

---

---

---

---

---

---

---

Work, Home, Commute!

---

---

---

---

---

---

---

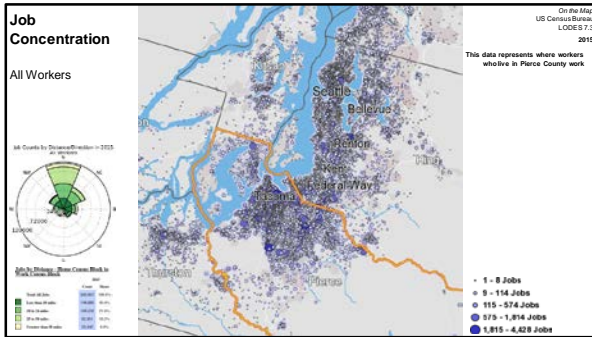
---

---

---

---

---




---

---

---

---

---

---

---

---

---

---

---

---



---

---

---

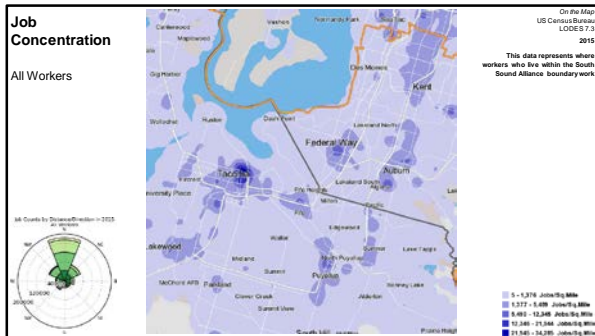
---

---

---

---

---



---

---

---

---

---

---

---

---



---

---

---

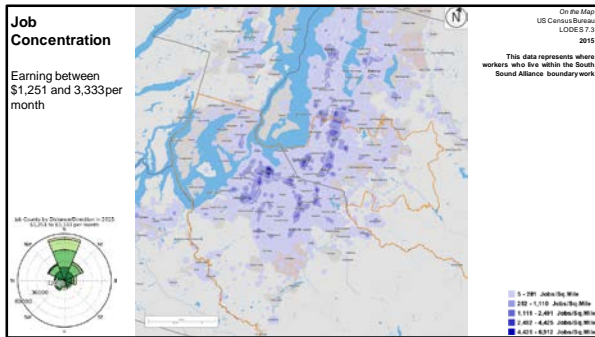
---

---

---

---

---



---

---

---

---

---

---

---

---



---

---

---

---

---

---

---

---



---

---

---

---

---

---

---

---








---

---

---

---

---

---

---

---




---

---

---

---

---

---

---

---

Pierce County Workers		Commute Distance 10 miles or more
Age	29 and Younger	55.7%
	30 - 54	57.9%
	55+	54.1%
Earnings	\$1250 per month or less	50.4%
	\$1251 - \$3333 per month	52.1%
	More than \$3333 per month	62.2%
Industry	Goods Producing	66.7%
	Trades, Transportation and Utilities	63.9%
	All other Service	51.1%

---

---

---

---

---

---

---

---

# Moving Forward

---

---

---

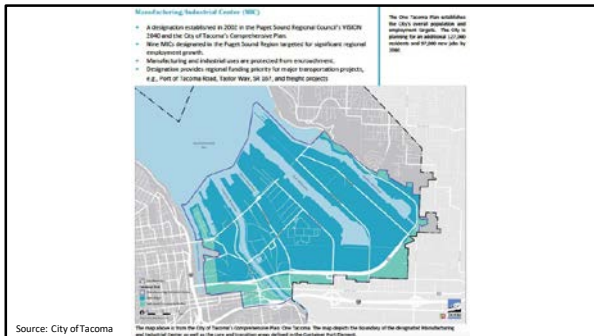
---

---

---

---

---



---

---

---

---

---

---

---

---

- ## Tideflats Subarea Plan
- **Plan Concept or Vision**
    - Preservation of industrial land base
    - Economic role of the Center
    - Relationship to Comprehensive Plan for the City
    - Market analysis
  - **Environment**
    - Protection of sensitive areas
    - Stormwater management
    - Air pollution and greenhouse gas emissions
  - **Economy**
    - Economic development strategies
    - Key sectors and industry clusters
  - **Public Services and Facilities**
    - Capital plans and investments to meet targeted growth
  - **Transportation**
    - Freight movement
    - Employee commuting
    - Transit and mode
- Source: City of Tacoma

---

---

---

---

---

---

---

---

Development  
Imagining Scenarios together

---

---

---

---

---

---

---

Urban and Industrial Futures

- Interface between the port and the built environment
- Interface between the port and sensitive natural areas (tideflats)
- Preservation of the industrial and manufacturing character of the port and the established manufacturing zone
- Economic development plan for the designated growth center associated with the port and 167.
- Interface between the port, transportation corridor, Tacoma, and Fife.
- Development of additional growth centers in the South Puget Sound

---

---

---

---

---

---

---

Our Roles

- To make this region thrive, we need to move beyond a single city solution.
- We need a regional/multi-sector involvement that includes the manufacturing, transportation and logistics sectors.
- This is also where Urban Studies and University of Washington Tacoma, as an Urban Serving University, come in.
- Let us bring our collective expertise to help imagine what the future might hold for a region that does not abandon its productive character...a region that improves quality of life for everyone and expands the economic base of the South Sound, by increasing production, improving wages, and building an environment that is family friendly, protective of labor and attractive to investors.

---

---

---

---

---

---

---