

UW Tacoma Remote Class Access Instructions (MAC)

For best results please take a moment to familiarize yourself with all the steps in these instructions before attempting to use.

Please note: The screen shots in these instructions may not match exactly as it depends on the browser you are using. Steps and procedures are similar for all browsers.

Depending on the current quality of the internet some steps in these instructions can take some time to complete, such as initial login to the web page, making the reservation, and connecting to the reserved resource. If any steps seem to pause for more than a few minutes please stop and restart the process.

Step 1. Install Microsoft Remote Desktop 10.

In order to access the UW Tacoma Remote Class, please make sure your computer has Microsoft Remote Desktop installed. If you don't have the Microsoft Remote Desktop App, please download it from the App Store.

To do so, open the app store and search "[Microsoft Remote Desktop 10](#)".

Step 2. Download and Install Husky OnNet

Then you will also need to connect to the UW network with Husky OnNet.

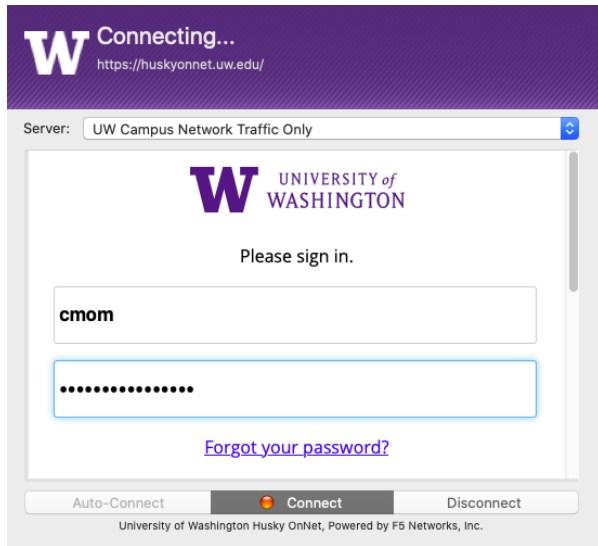
If you have not already done so, please install and run the Husky OnNet VPN client.

The software and installation instructions can be found in the following location:

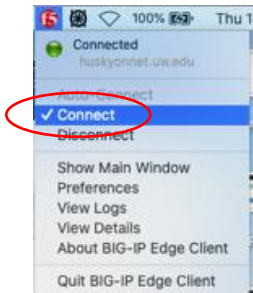
<https://itconnect.uw.edu/connect/uw-networks/about-husky-onnet/>

Step 3. Remote in UW Tacoma Remote Class

1. Go to "**Applications**" and launch **BIG-IP Edge Client**
2. Click **Connect** and enter your **UW email login** and **password** and hit **Return** on your keyboard



3. To double-check if your **Big-IP Edge** is connected. On the top right corner, click on **F5** red icon, and you should see the **Connect** is checked.



4. Once you are connected to **Husky OnNet VPN**, aka **BIG-IP Edge Client**.
5. Open **Firefox browser** and copy and paste the following URL: <https://uwtclass.tacoma.uw.edu/> (Google Chrome or Safari are not compatible)
6. In the **User, Name** field enter just your **UWNetID** and **Password** field enter your **UW Tacoma computer login password** and click "**Log in**" (**Example: cmom**) **If you don't have a UW Tacoma computer login, please send an email to tachelp@uw.edu**

Log in.

User Name

Password

7. Once logged in, Once logged in you will see the following page. For most students, please choose "RemoteLab".

Pool Name	Total Seats	Available	In Use
Joy009_SET_Students_Only_For_Visual_Studio	5	5	0
RemoteLab	20	20	0

Remote Lab Version 2.0 Build 5263.28864

8. When you click one of the pools, it will tell you how many computers are available and what software is installed.

Pool: RemoteLab Total Seats: 10 Available: 10 In Use: 0

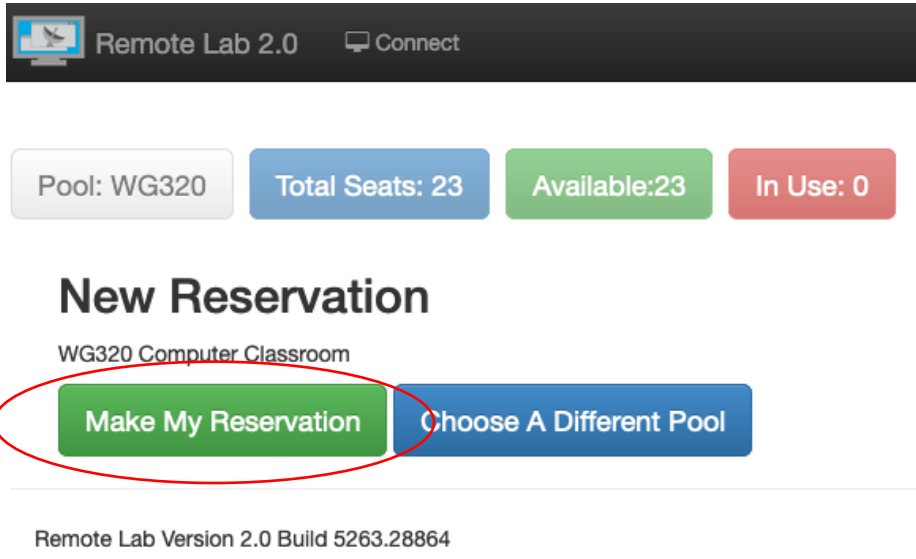
New Reservation

Software available on these remote compute machines:

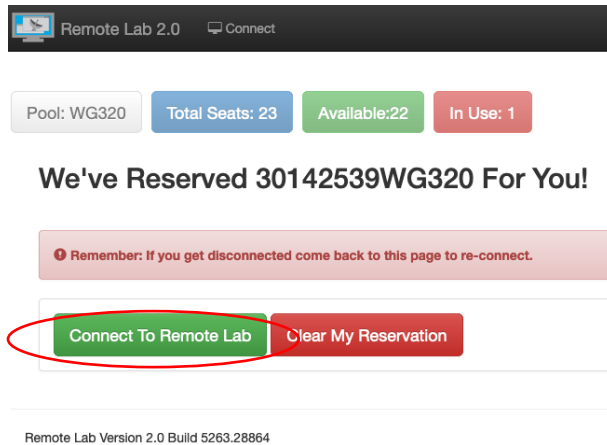
- Adobe Creative Cloud
- ArcGIS Desktop
- Auto CAD education edition
- JGrasp
- Lumion
- MATLab R2021a
- MEGA
- PowerBI
- MS Office 2019
- MS Project
- MS Visio
- MineQL
- PUTTY
- PyCharm
- R & R Studio
- SketchUp Pro
- SPSS27
- Surfer
- Tableau

Make My Reservation

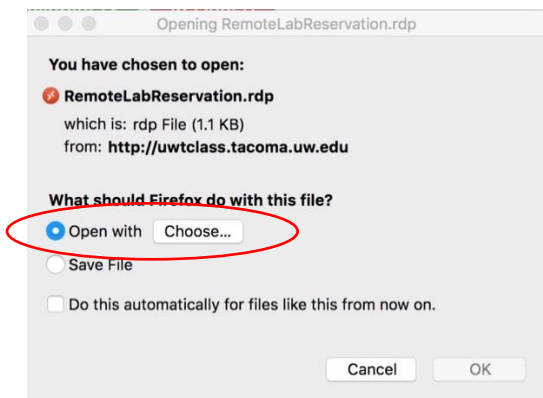
9. Click the **“Make My Reservation”** button to reserve one of the available workstations



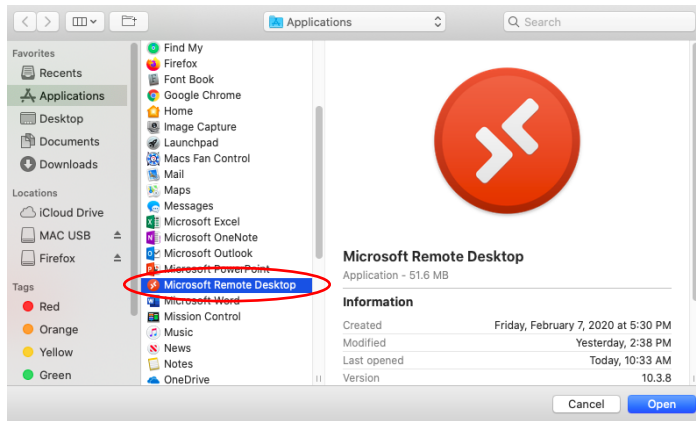
10. Once the reservation has been made, you can use the **“Connect To Remote Lab”** button to download the connection file (RDP file).



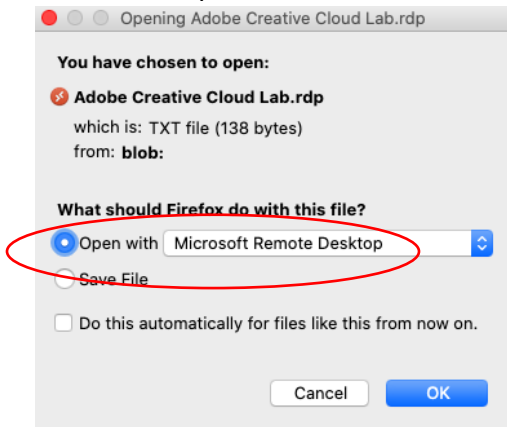
11. Select **Open with** and click **“Choose”** and click **OK**



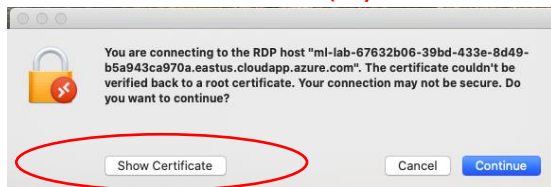
12. Under “Application” Select “Microsoft Remote Desktop” and click “Open”



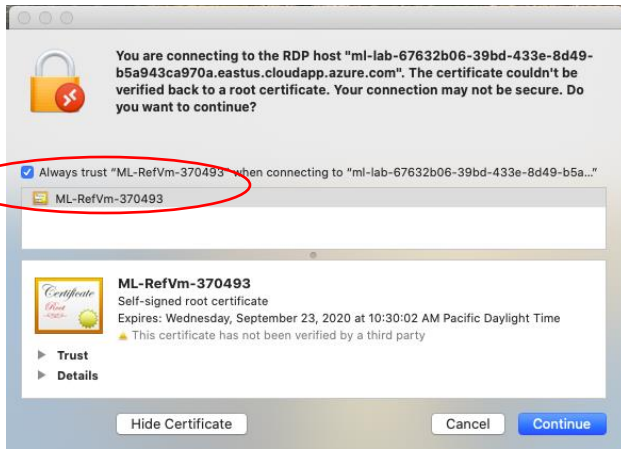
13. Click **Ok** to open Microsoft Remote Desktop



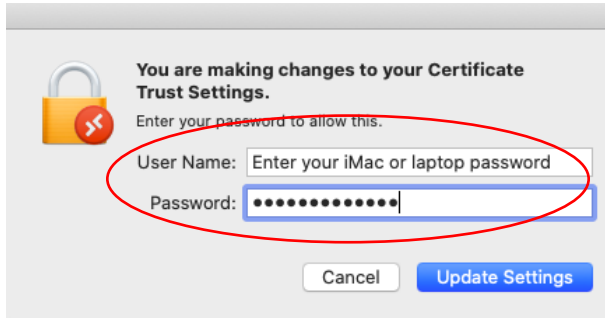
14. Click “Show Certificate” (If you don’t see this skip to step 16)



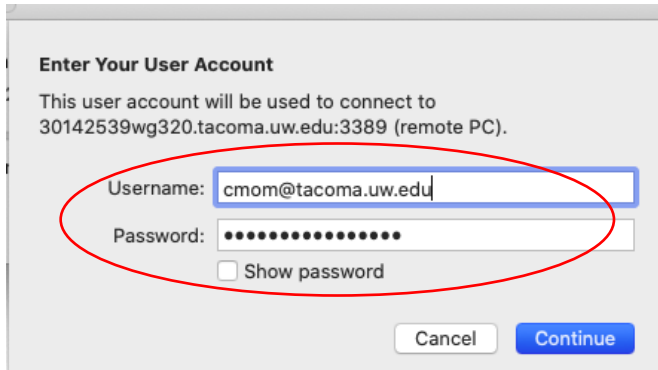
15. Check the box “Always trust “ML-Rv/Vm... Click “Continue”



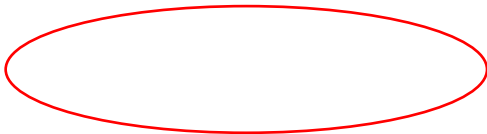
16. Enter **YOUR iMac or laptop** password and click **Update Settings**.

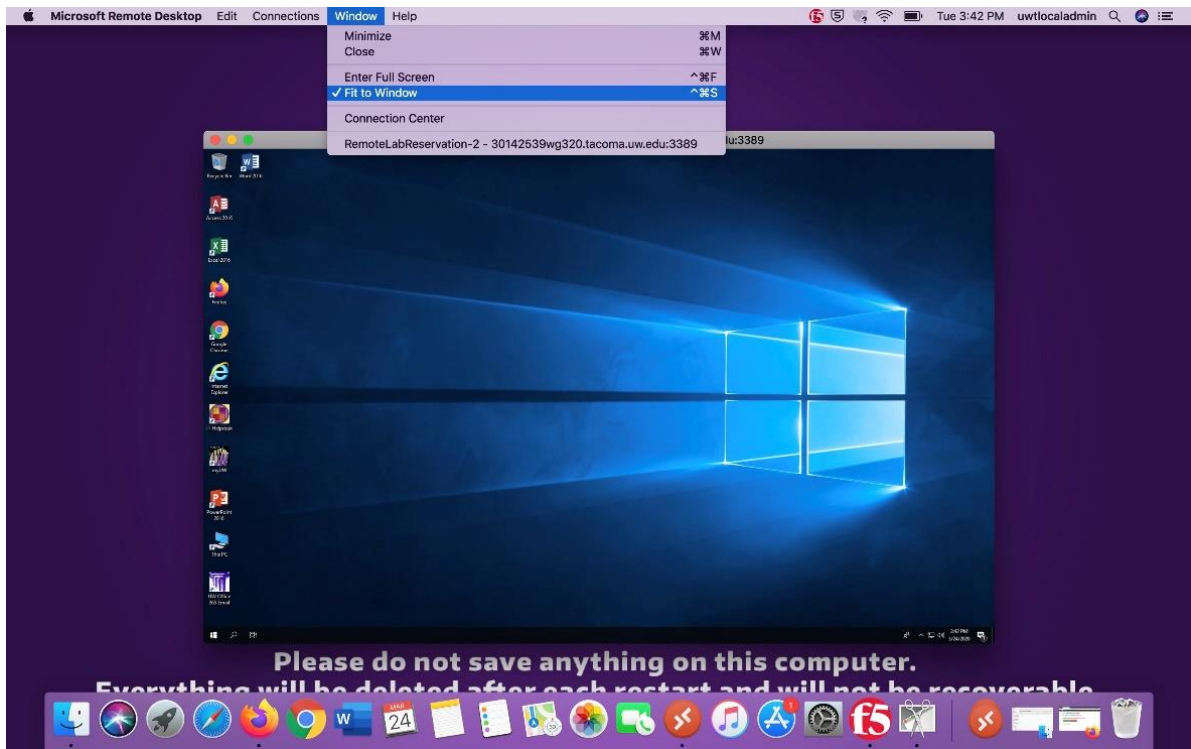


17. Enter your **UW Tacoma computer login** password, click **“Continue.”**



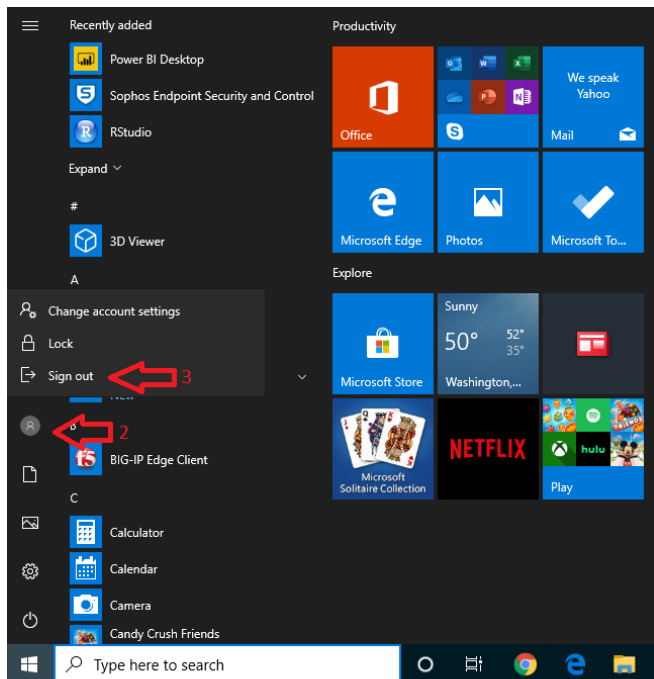
18. If the remote window doesn't fit into your screen, bring the mouse to the top, click **“Windows”** and choose **“Fit to Screen.”** (It might take a few minutes on a welcome Windows profile)





*****Closing out the Desktop*****

19. Click on the **Start Menu**, then click on the head in a circle, then click “**Sign out.**”



20. Go back to your **browser** and click “**Clear My Reservation.**”

Pool: WG320

Total Seats: 23

Available:22

In Use: 1

We've Reserved 30142539WG320 For You!

Remember: If you get disconnected come back to this page to re-connect.

Connect To Remote Lab

Clear My Reservation

If you have any questions, please email us at tachelp@uw.edu