

INNOVATIVE APPROACHES TO RESILIENT DESIGN OF GLOBAL IMMIGRATION

The City of Kent Community Garden Network

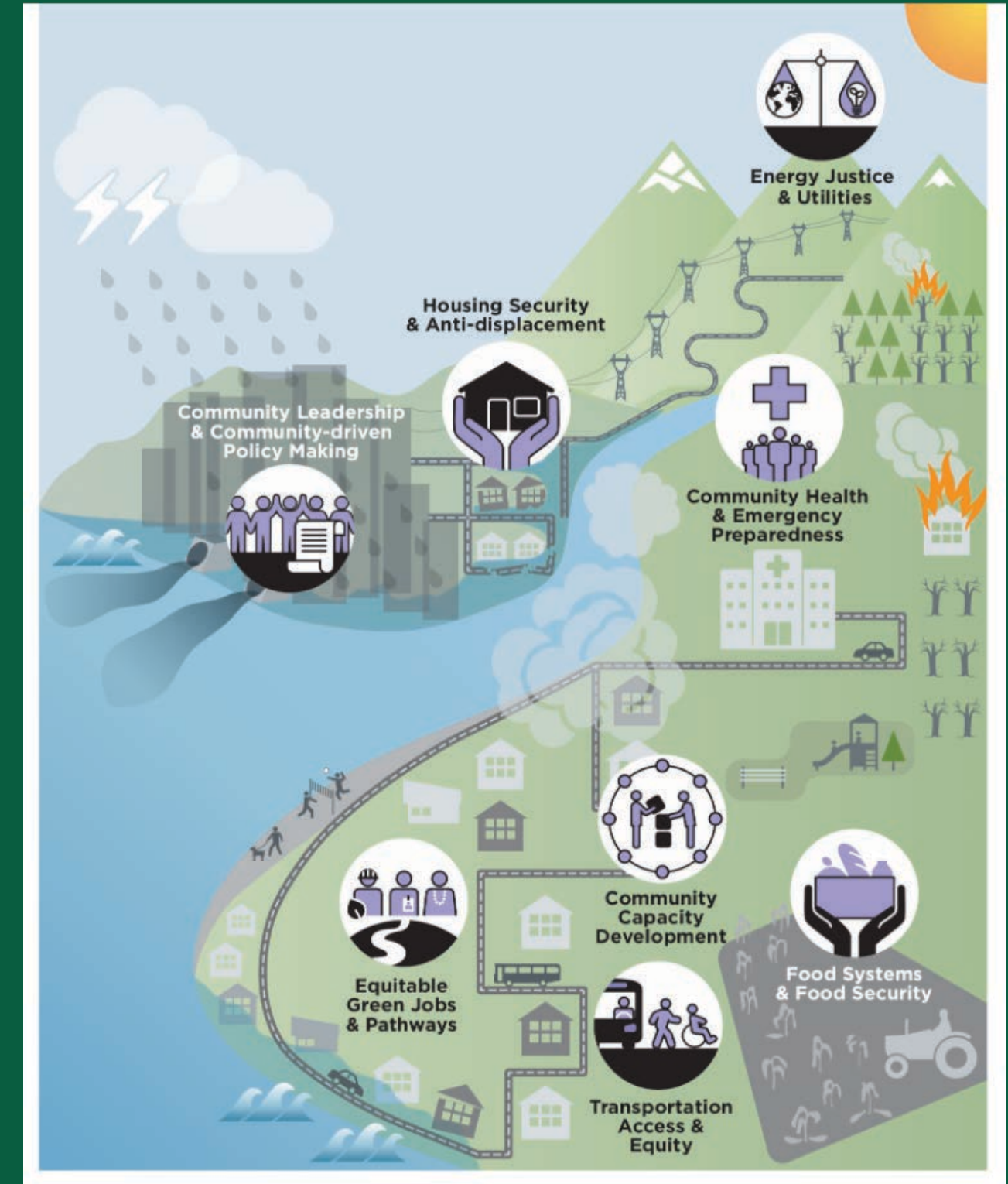
Sama Alnuaimi
Queenie P Gipaya
Amanda McIntire (Henritze)
James Ku

WORLD RELIEF SEATTLE + KING COUNTY SCAP

- Overlapping urban interventions, community gardens, and creating urban design framework
- Feasibility study alongside strategic framework
- Site Location
- Design emphasizing important components of global interventions
- Development catered to people and climate



PARADISE PARKING LOTS: A WRS COMMUNITY GARDEN PROJECT



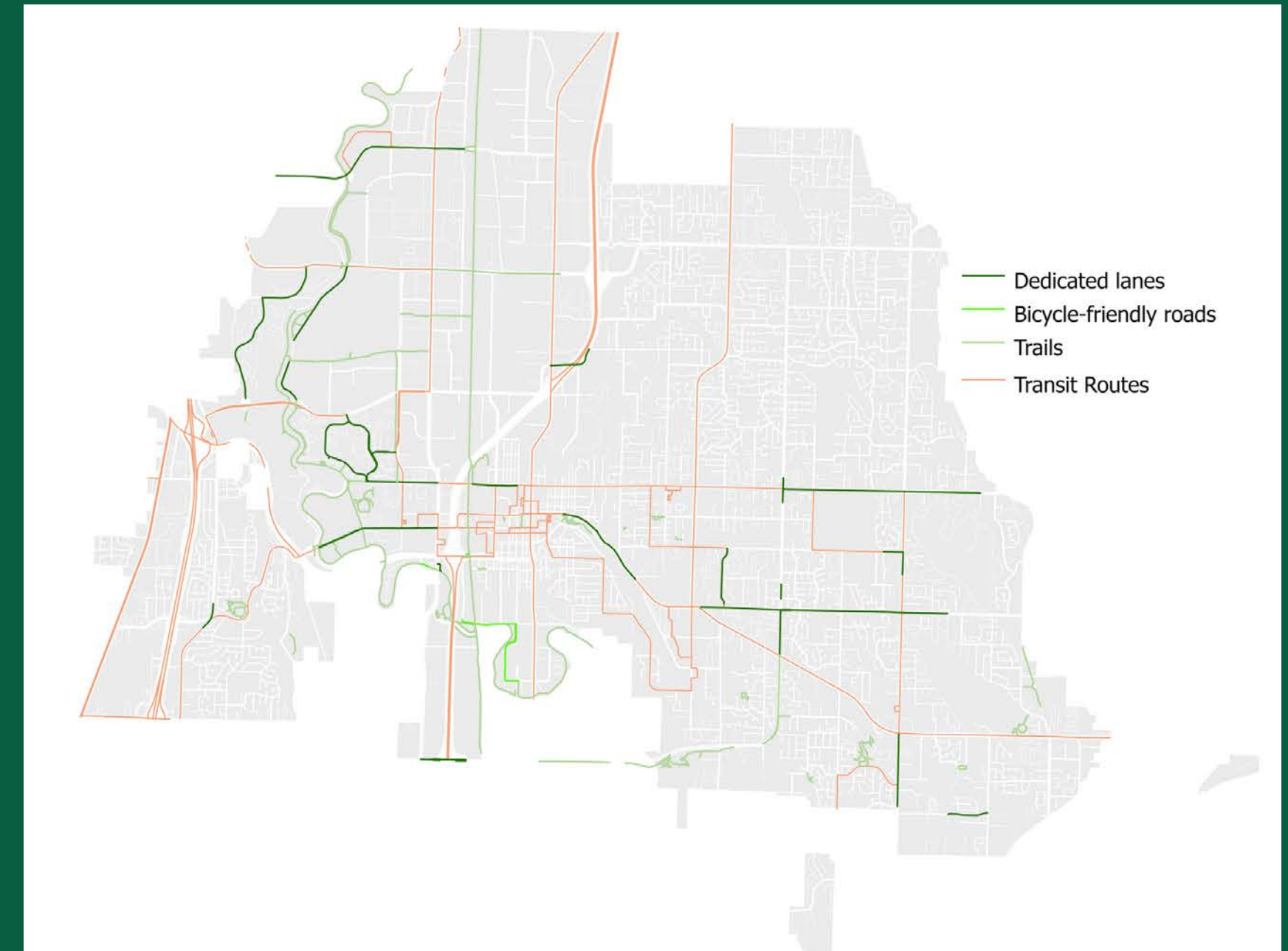
KING COUNTY STRATEGIC CLIMATE ACTION PLAN-CLIMATE EQUITY FOCUS

ACCESS + MOBILITY

- **How to improve safety and non-motorized access to transit and open space?**
- Integrate King County's SCAP and Carbon Neutral Implementation Plan target to reduce GHG emissions by 25% by 2050 through designing pedestrian and bike connections
- Encourage multimodal transportation by connecting local and historic destinations.
 - Repair the damage of urban freeways/highways



MEEKER ST UNDERPASS , KENT VS
CAMPBELL AVE, CALIFORNIA

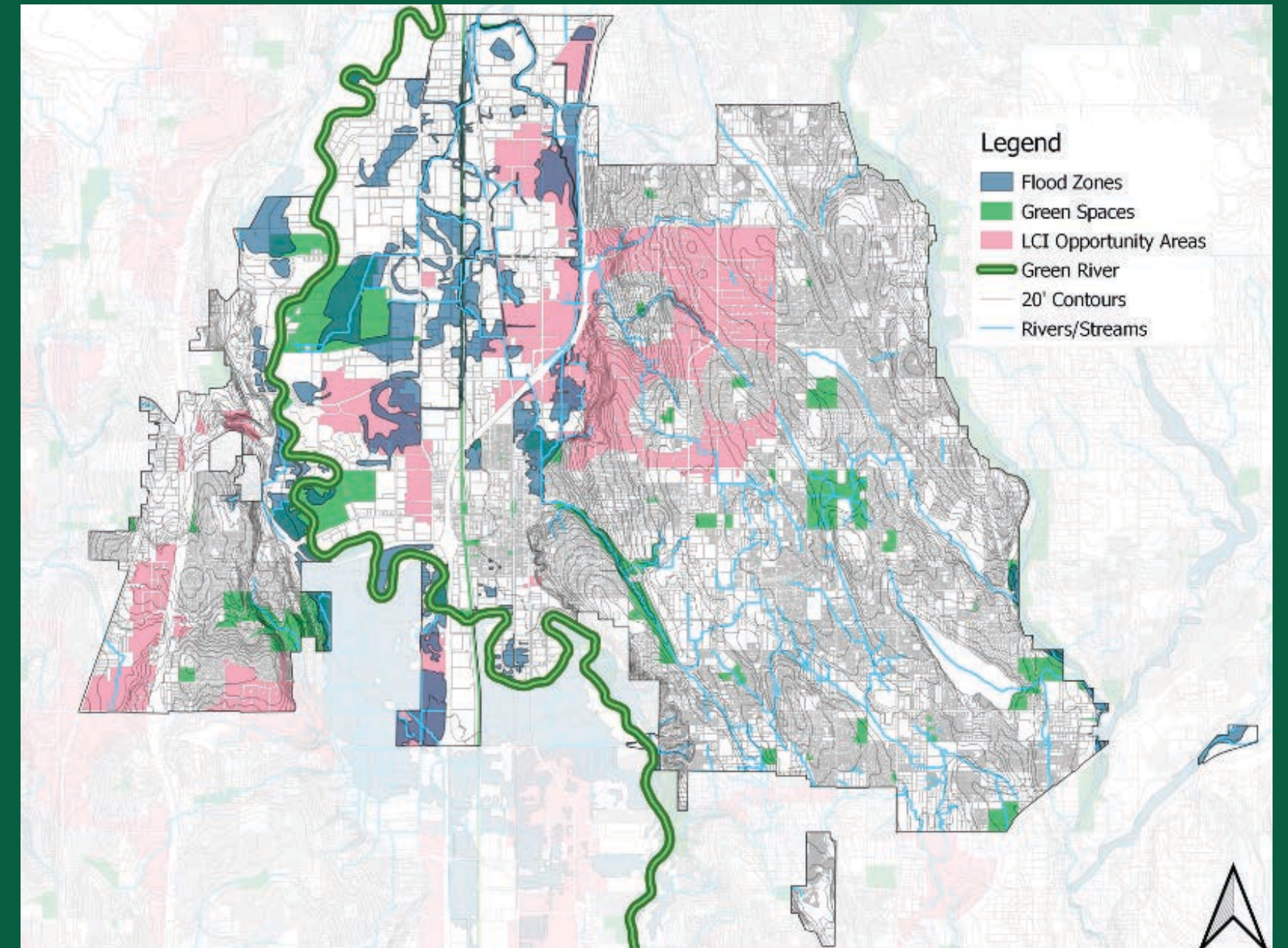


CLIMATE RESILIENCE

- **What are urban design approaches to build climate change resilience?**
- Climate change affects many existing environmental, health, and safety challenges.
- Equitable and sustainable developments.

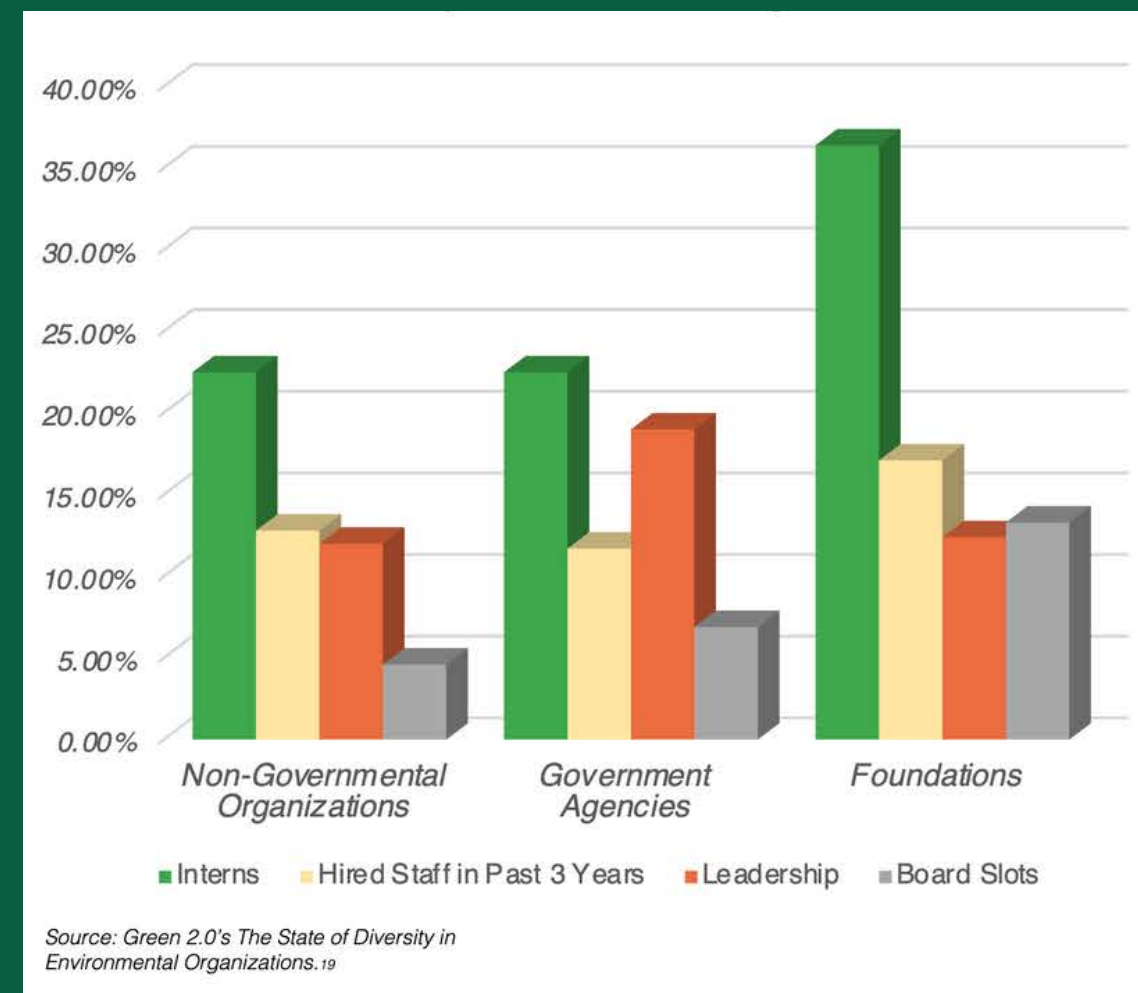


MILL CREEK MIDDLE SCHOOL, KENT, WA

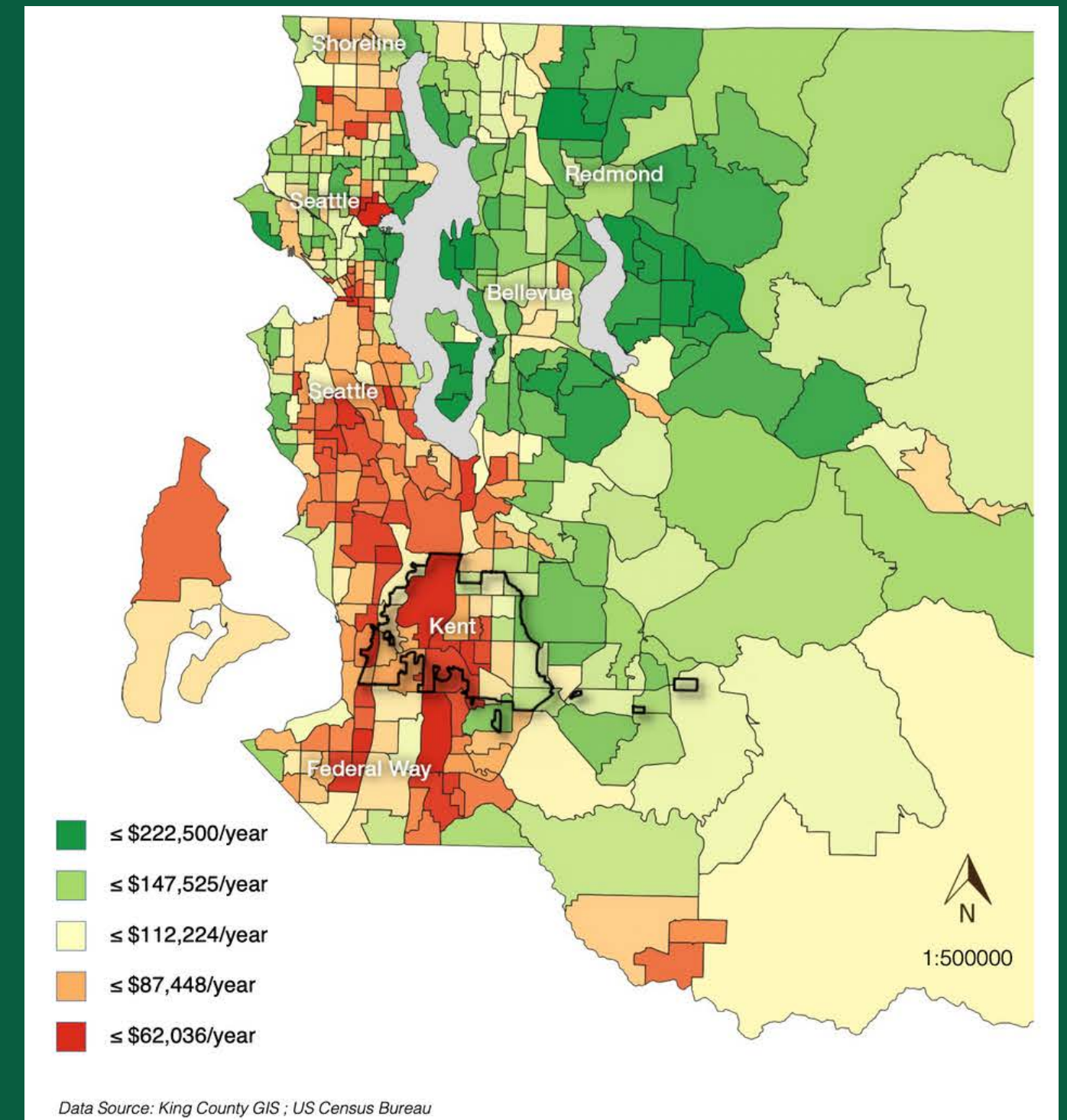


GREEN ECONOMY

- What to introduce in the design to increase job opportunities?
- Only 16% of People of Color are in the environmental sector in King County.
- The average median household income within the Kent area is low.
- Design for a higher job opportunity for future immigrants.
- Equitable Green Jobs opportunity.



STAFF DIVERSITY IN ENVIRONMENTAL ORGANIZATION



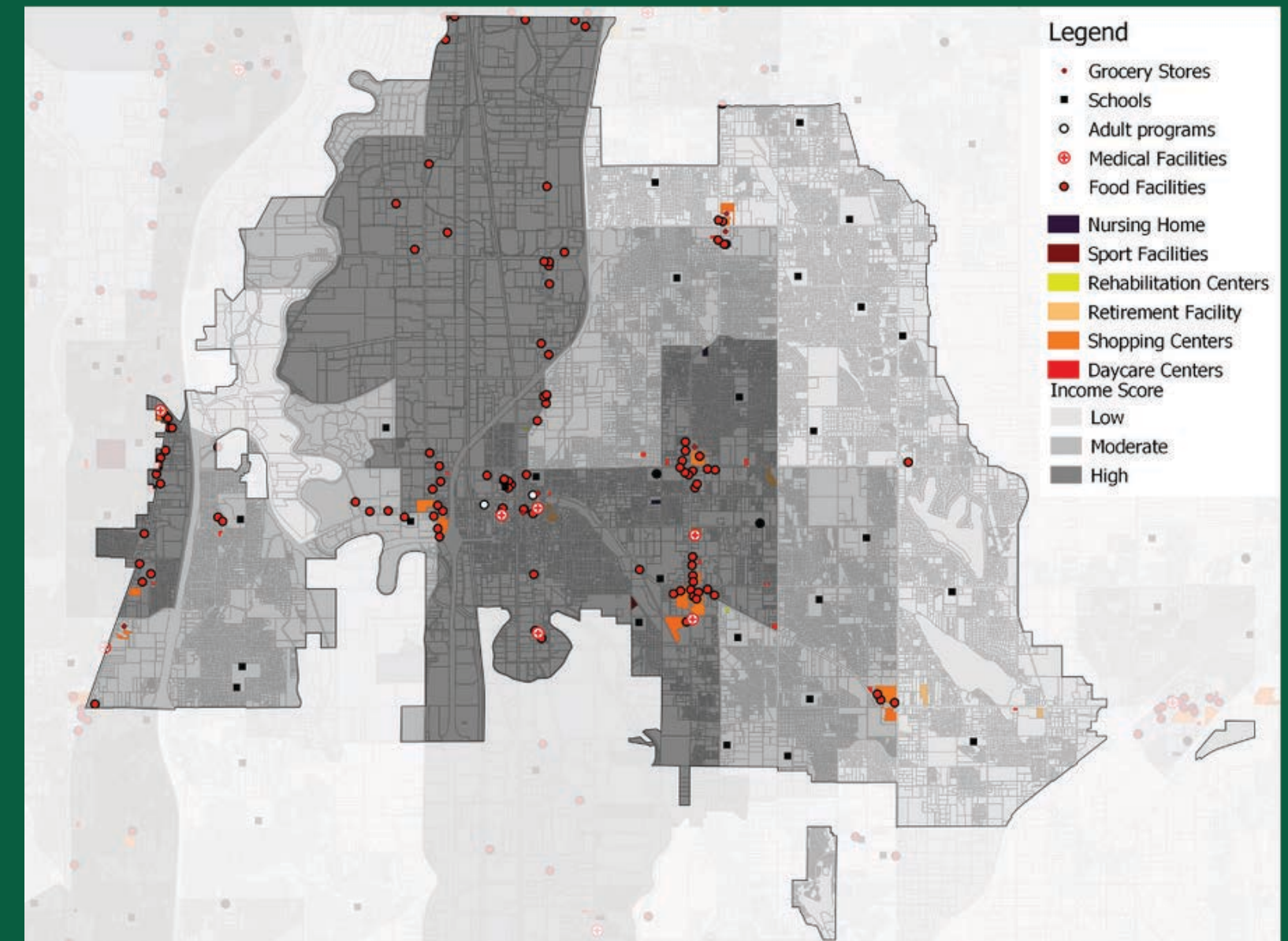
KING COUNTY MEDIAN HOUSEHOLD INCOME

COMMUNITY INFRASTRUCTURE

- How can we create the biggest impact in community placemaking while adhering to climate action?
- Entrepreneurial opportunities
- Skill and community building
- ACS income data with resources



SEGE PARK, MÅLMÖ
KJELLANDER SJÖBERG



SERVICES AND ACS INCOME DATA

TESTIMONIES FROM WRS GARDENERS



"WHEN YOU GO TO THE MARKET, ORGANIC PRODUCE IS MUCH TOO EXPENSIVE"

NIDHAL DECIDED TO LEARN GARDENING DUE TO THE DESIRE TO PROVIDE HEALTHY, ORGANIC FOOD FOR HER FAMILY. SHE CURRENTLY TENDS TO A ROBUST PLOT AT PARADISE PARKING LOTS.



"WE ARE VERY HAPPY THAT WE ARE ABLE TO PLANT AND HARVEST A LOT OF VEGETABLES HERE"

CHANDRA AND GADUL ARE BROTHERS THAT CONTINUE TO PURSUE TIES TO THEIR BHUTANESE IDENTITY. GADUL LOVES GROWING AND TENDING TO MUSTARD GREENS, A VEGETABLE USED FOR GUNDRUK.