

# Pierce Conservation District Wildfire Preparedness

Jennifer Huynh  Global Engagement Conference | 2025



13,800  
ACRES

BURNED IN WESTERN WASHINGTON  
IN 2023  
WA STATE DEPT. OF NATURAL  
RESOURCES

# DESIGN PROBLEM

[Home](#) › [What We Do](#) › [Climate Resiliency](#) › [Wildfire Preparedness](#)

## WILDFIRE PREPAREDNESS | PIERCE COUNTY



Over the past few years, wildfires have begun to show up in our "backyards." With our summers getting drier, hotter, and smokier, we're all looking for ways to protect ourselves from wildfire risks.

The good news is we can help you get **wildfire ready**. That includes things like:

- Completing a **wildfire hazard risk assessment** for your property
- Examining wildfire smoke impacts to your **home and health**
- Connecting you with other **local experts and resources**

### REACH OUT TO US

Interested in receiving help to prepare your property for wildfire? Click on the yellow button below and we'll follow up!

[CLICK HERE](#)

### CONTACT US

**James Moore**

Climate Resiliency  
Program Manager  
[JamesM@pierced.org](mailto:JamesM@pierced.org)  
Phone: (253) 720-2514

## WILDFIRE WEBINAR

**May 25, 2022** -- Pierce Conservation District hosted this webinar for residents to learn about how they can become "Firewise." We also shared how Pierce Conservation District, the WA Department of Natural Resources, and your local fire department can support you with the right resources to protect yourself from wildfire risks.



## RESOURCES

Want to learn more about Firewise and what resources are already available for you to become wildfire ready? Check out the following, we're always adding to this list with the most up-to-date information:

- [Pierce County Neighborhood Emergency Teams](#)
- [Pierce County ALERT](#)
- [National Fire Protection Firewise USA](#)
- [How To Protect Yourself from Wildfire Smoke](#)
- [When the Weather Warms Up, Know How to Stay Safe](#)
- [Request a Fire Resistant Plants and Landscaping Consultation \(WSU Master Gardeners\)](#)

## DESIGN VALUES

We center the voices of those who are directly impacted by the outcomes of the design process.

We prioritize the design's impact on the community over the intentions of the designer.

We see the role of the designer as a facilitator rather than an expert.

Before seeking new design solutions, we look for what is already working at the community level. We honor and uplift traditional, indigenous, and local knowledge and practices.

# BACKGROUND RESEARCH

- INSIGHT FROM JAMES, WILDFIRE PREVENTION MANAGER
- WILDFIRE PREPAREDNESS  
WEBPAGES: SNOHOMISH COUNTY,  
WA STATE DEPT. NATURAL  
RESOURCES
- PIERCE COUNTY DEMOGRAPHIC  
RESEARCH:
  - ENGLISH SPEAKERS
  - 25 - 34 YEARS OF AGE

# DESIGN ITERATIONS

# SKETCHES

WILDFIRE PREPAREDNESS | PIERCE COUNTY

image

Wildfire Prepared (Firewise)?

act as how bar / too

who  
what we can do for you?

Resources

WILDFIRE READY NEIGHBORS

description

FIREWISE

description

WRN vs. FIREWISE : WHAT IS THE DIFF?

KIRO 7 VIDEO

written brief of video

other more key info

- WRN
- Grants opp.
- Best management Pract.

Events

Other Resources

- videos
- links
- info graphics

# PROTOTYPE

[Home](#) › [What We Do](#) › [Climate Resiliency](#) › Wildfire Preparedness

## WILDFIRE PREPAREDNESS | PIERCE COUNTY



### CONTACT US

**James Moore**

Climate Resiliency  
Program Manager  
[JamesM@pierced.org](mailto:JamesM@pierced.org)

Phone: (253) 720-2514

Over the past few years, wildfires have begun to show up in our "backyards." With our summers getting drier, hotter, and smokier, we're all looking for ways to protect ourselves from wildfire risks.

The good news is we can help you get **wildfire ready**. That includes things like:

- Completing a **wildfire hazard risk assessment** for your property
- Examining wildfire smoke impacts to your **home and health**
- Connecting you with other **local experts and resources**

# PROTOTYPE

## REACH OUT TO US - WILDFIRE READY NEIGHBORS

Interested in receiving help to prepare your property for wildfire? Reach out to use through [Wildfire Ready Neighbors](#).



The Wildfire Ready Neighbors program connects you with your local wildfire expert, James, for a FREE consultation of your property.

As a Pierce County resident, James will assess your property, typically in under an hour, either walking with you or individually. Afterward, you'll receive a detailed report within 3-5 business days, outlining yard and home maintenance tips to reduce the risk of ignition during a wildfire.

Feel free to invite others who may benefit from the information. Wildfire Readiness also serves other counties – visit their website for more details.

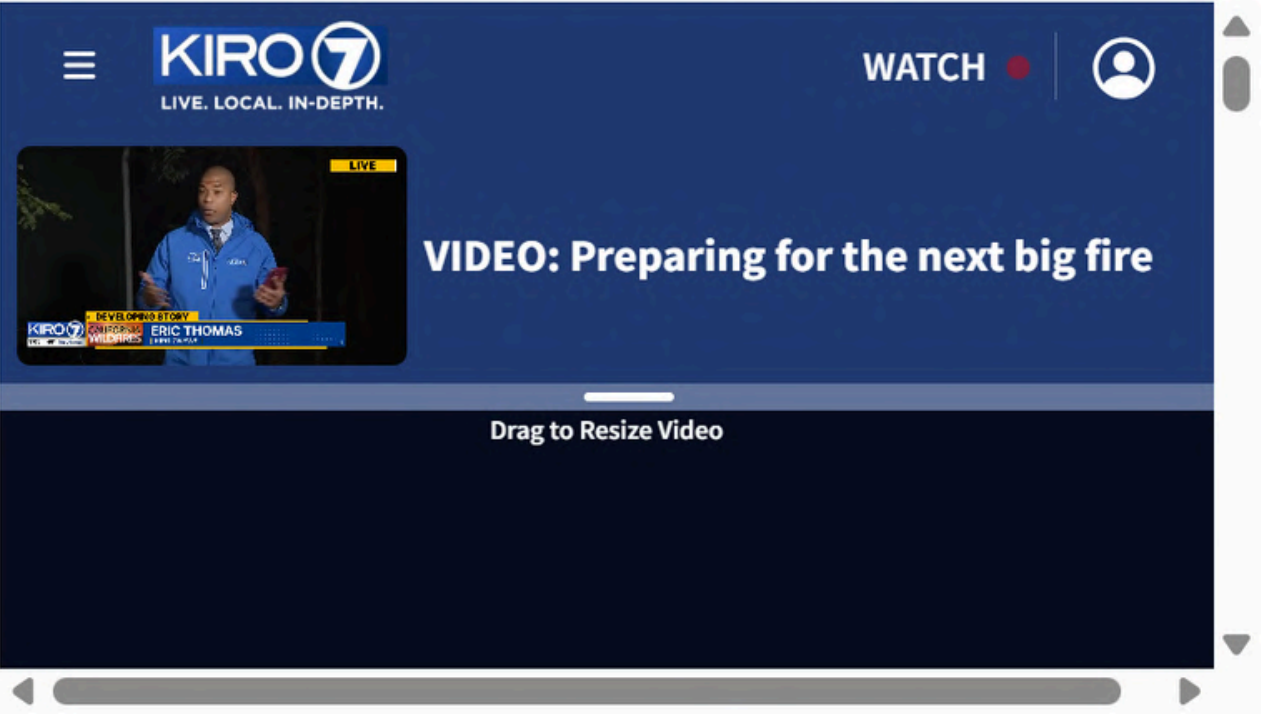
## Firewise Program: Community-Driven Wildfire Risk Reduction



The [Firewise program](#) is a community-based initiative designed to help neighborhoods and groups of properties reduce the risk of wildfires. The program encourages communities to take collective action to prevent and prepare for wildfires. Rather than targeting individual homes, Firewise promotes a collaborative approach where communities work together to create defensible spaces, remove fire hazards, and increase overall wildfire resilience.

Through the [Firewise program](#), communities receive tools, resources, and expert guidance to assess fire risks, develop local action plans, and implement preventive measures such as fire-resistant landscaping and building modifications. The goal is to reduce the likelihood of fire spreading and improve the safety of residents, homes, and properties during wildfire events. By working together, Firewise communities build stronger resilience and are better equipped to face the challenges of wildfires.

## KIRO 7 NEW: PREPARING FOR THE NEXT BIG FIRE

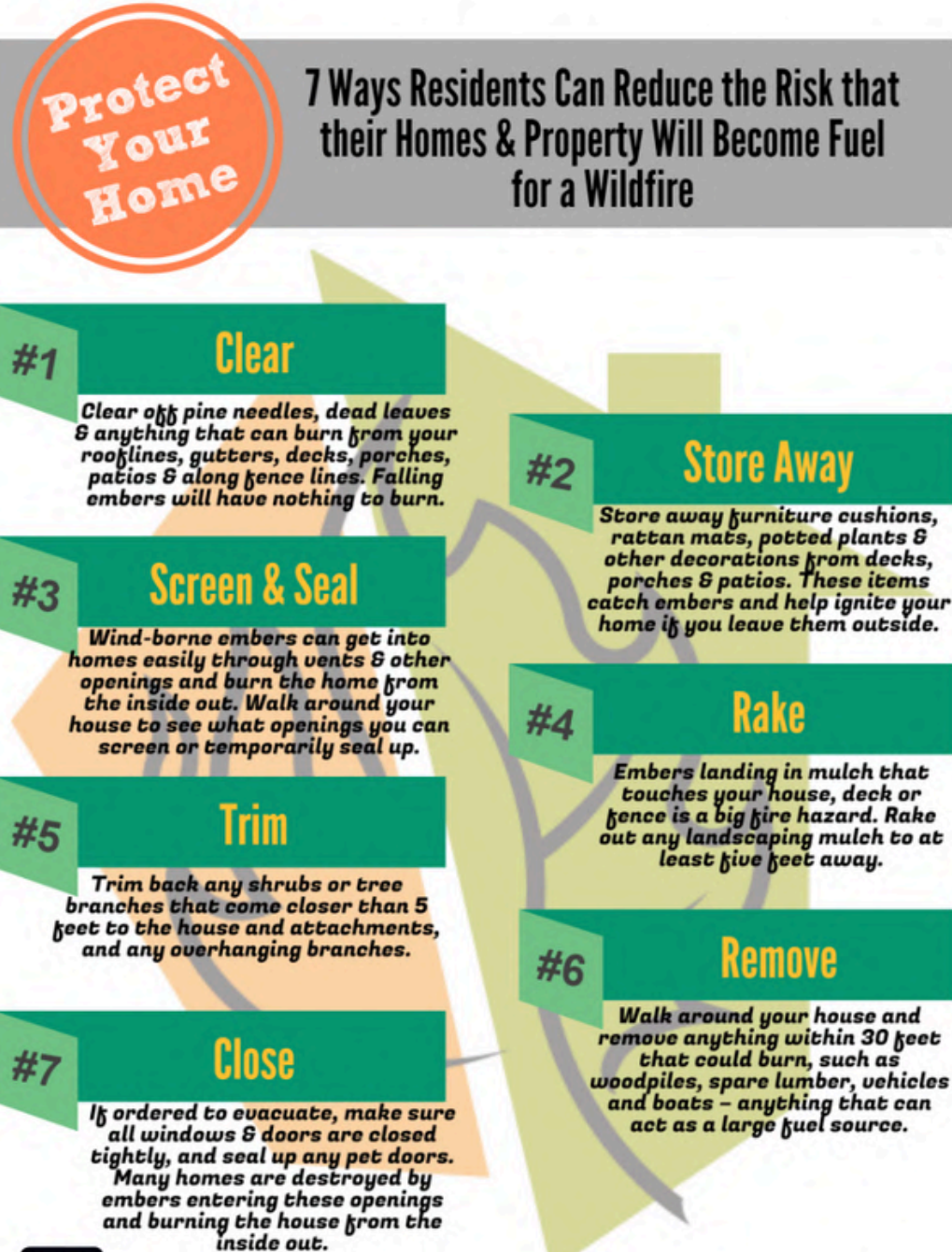


The KIRO 7 video discusses preparations for the next major wildfire, highlighting the increasing risks due to climate change and dry conditions. Experts emphasize the importance of community preparedness, fire mitigation strategies, and the role of emergency response teams. The report also covers preventive measures such as controlled burns and public awareness efforts to reduce wildfire damage. For more details, you can watch the full video [here](#).

# PROTOTYPE

## WHAT YOU CAN DO: BEST PRACTICES

- [Preparing Homes For Wildfire](#)
- [How To Be Ember Aware](#)
- 7 Ways To Reduce Risk:



NFPA has many more tips and safety recommendations on its websites, including [www.firewise.org](http://www.firewise.org).

## CALENDAR

There are no published events in current month.

### March 2025

Sun	Mon	Tue	Wed	Thu	Fri	Sat
23	24	25	26	27	28	01
02	03	04	05	06	07	08
09	10	11	12	13	14	15
16	17	18	19	20	21	22
23	24	25	26	27	28	29
30	31	01	02	03	04	05

[View All](#)

## Other Resources

- [The Wildland-Urban Interface](#)
- [IBHS Wildfire Research: Why Only Half This Home Caught Fire](#)

## CONTACT US

**James Moore**

Climate Resiliency

Program Manager

[JamesM@pierced.org](mailto:JamesM@pierced.org)

Phone: (253) 720-2514

# USABILITY TESTS

# PARTICIPANTS

## RESIDENTS OF THE FOCUS AREAS

REACHED OUT TO PIERCE COUNTY FIRE DISTRICT, EAST PIERCE FIRE & RESCUE, KEY PENINSULA FIRE DEPARTMENT, & MT. RAINIER LIONS CLUB

---

## UTILIZED AI

GEMINI, CHATGPT, COPILOT, CLAUDE

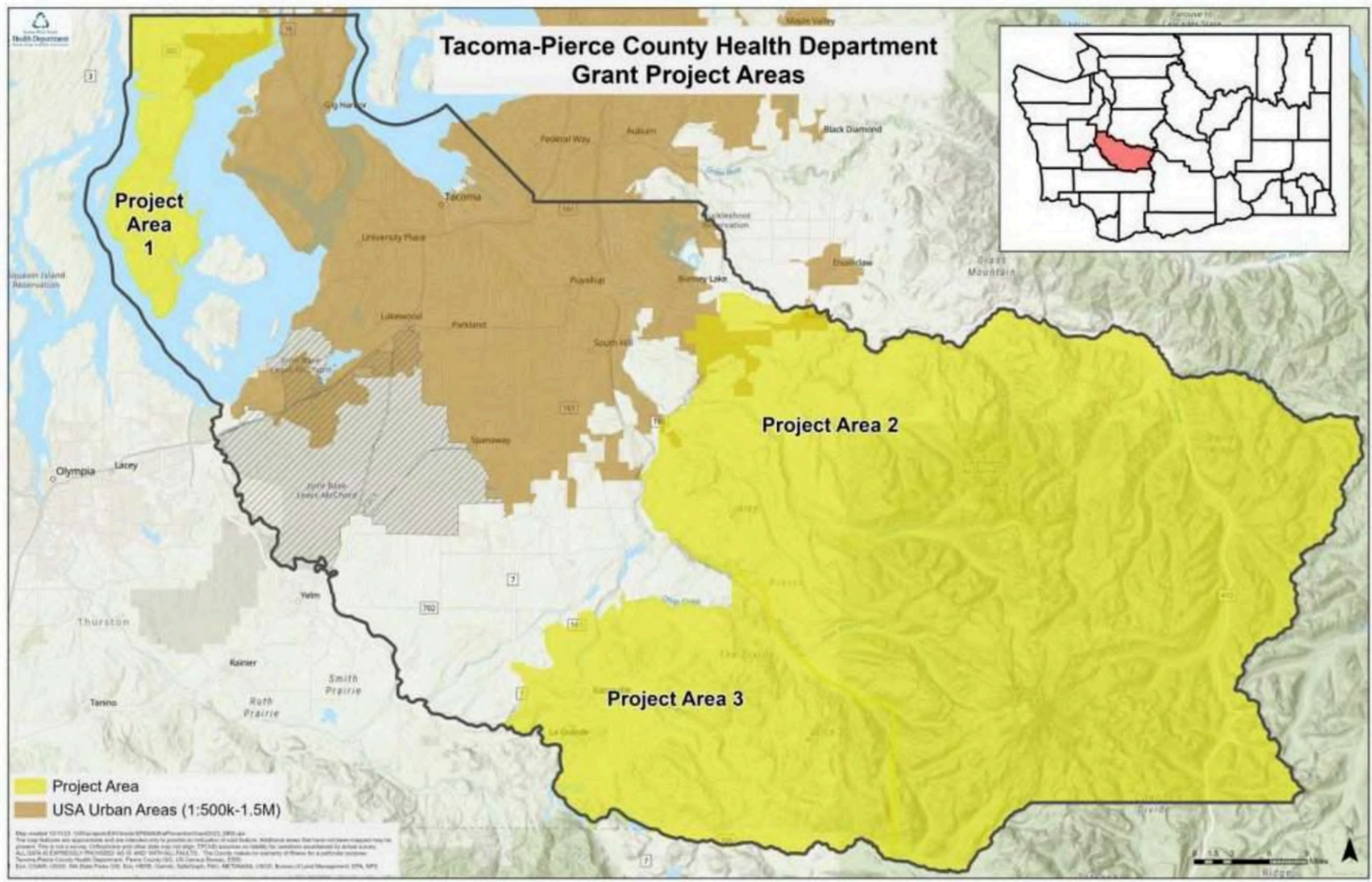
---

## RESIDENTS IN PIERCE COUNTY

DUE TO LIMITED PARTICIPANTS IN THE TARGET AUDIENCE ALSO INCLUDED RESIDENTS IN THE GENERAL PIERCE COUNTY AREA

---

# FOCUS AREAS



# TASKS



## DEMOGRAPHICS

- WHERE IN PIERCE COUNTY DO YOU LIVE?
- ARE YOU A HOMEOWNER OR A LANDOWNER?



## TASKS

- LOCATE THE SECTION...
- IN WHICH SECTION OF THE WEBPAGE DID YOU FIND THIS INFORMATION?
- HOW EASY OR DIFFICULT WAS IT TO FIND THIS SECTION? 1 = VERY EASY, 5 = VERY DIFFICULT



## REFELCTIONS

- UNCLEAR OR CONFUSING TEXT/ EXPLANATIONS?
- ADDITIONAL INFORMATION THAT WAS MISSING?

## USABILITY FINDINGS

57%

- MORE CONSIDERABLE INFORMATION : DIRECT ACTION STEPS
- CALL TO ACTION BUTTONS

28%

- SEARCH / NAVIGATION BAR
- WILDFIRE SEASON
- CURRENT FIRE RISKS / ACTIVE FIRES

# CHANGES

## ACTION STEPS

### REACH OUT TO US - WILDFIRE READY NEIGHBORS

Interested in receiving help to prepare your property for wildfire? Reach out to use through [Wildfire Ready Neighbors](#).



The Wildfire Ready Neighbors program connects you with your local wildfire expert, James, for a FREE consultation of your property.

As a Pierce County resident, James will assess your property, typically in under an hour, either walking with you or individually. Afterward, you'll receive a detailed report within 3-5 business days, outlining yard and home maintenance tips to reduce the risk of ignition during a wildfire.

Feel free to invite others who may benefit from the information. Wildfire Readiness also serves other counties – visit their website for more details.

## ACTION BUTTONS

### REACH OUT TO US

Interested in receiving help to prepare your property for wildfire? Click on the yellow button below and we'll follow up!

**CLICK HERE**

# CHANGES

## NAVIGATION BAR

## ADDITIONAL WILDFIRE INFORMATION

### WILDFIRE PREPAREDNESS | PIERCE COUNTY



#### CONTACT US

**James Moore**

Climate Resiliency  
Program Manager  
[JamesM@pierced.org](mailto:JamesM@pierced.org)  
Phone: (253) 720-2514

Over the past few years, wildfires have begun to show up in our "backyards." With our summers getting drier, hotter, and smokier, we're all looking for ways to protect ourselves from wildfire risks.

The good news is we can help you get **wildfire ready**. That includes things like:

- Completing a **wildfire hazard risk assessment** for your property
- Examining wildfire smoke impacts to your **home and health**
- Connecting you with other **local experts and resources**

### FIRE DANGER

#### Pierce County

**LOW**

Updated 03/18/2025

#### Lewis County

**LOW**

Updated 03/18/2025

#### Gifford Pinchot NF/USFS

**LOW**

Updated 03/18/2025

### BURN BANS

#### Pierce County

**As of September 20th at 12:00 PM,  
there is no burn ban**

Effective 09/20/2021 12:00 PM

#### Lewis County

**As of September 21st at 12:00 AM,  
there is no burn ban**

Effective 09/21/2024 12:01 AM

# CHANGES

[Home](#) › [What We Do](#) › [Climate Resiliency](#) › [Wildfire Preparedness](#)

## WILDFIRE PREPAREDNESS | PIERCE COUNTY



Over the past few years, wildfires have begun to show up in our "backyards." With our summers getting drier, hotter, and smokier, we're all looking for ways to protect ourselves from wildfire risks.

The good news is we can help you get **wildfire ready**. That includes things like:

- Completing a **wildfire hazard risk assessment** for your property
- Examining wildfire smoke impacts on your **home and health**
- Connecting you with other **local experts and resources**

### CONTACT US

**James Moore**

Climate Resiliency  
Program Manager  
[JamesM@pierced.org](mailto:JamesM@pierced.org)  
Phone: (253) 720-2514

### REACH OUT TO US - WILDFIRE READY NEIGHBORS



The [Wildfire Ready Neighbors](#) connects you with your local wildfire expert for a FREE consultation of your property.

As a Pierce County resident, your property can be assessed typically in under an hour. Your wildfire expert can either walk with you or individually during the assessment. Afterward, you'll receive a detailed report within 3-5 business days, outlining yard and home maintenance tips to reduce the risk of ignition during a wildfire.

Feel free to invite others who may benefit from the information. [Wildfire Ready Neighbors](#) also provides other services, and serves other counties – visit their website for more details.

Interested in receiving help to prepare your property for wildfire? Reach out to us through the [Wildfire Ready Neighbors website](#). Or click the button below to get started.

**CLICK HERE**

### FIREWISE PROGRAM: COMMUNITY-DRIVEN WILDFIRE RISK REDUCTION



The [National Fire Protection Association \(NFPA\) Firewise program](#) is a community-based initiative that helps neighborhoods reduce the risk of wildfires through collective action.

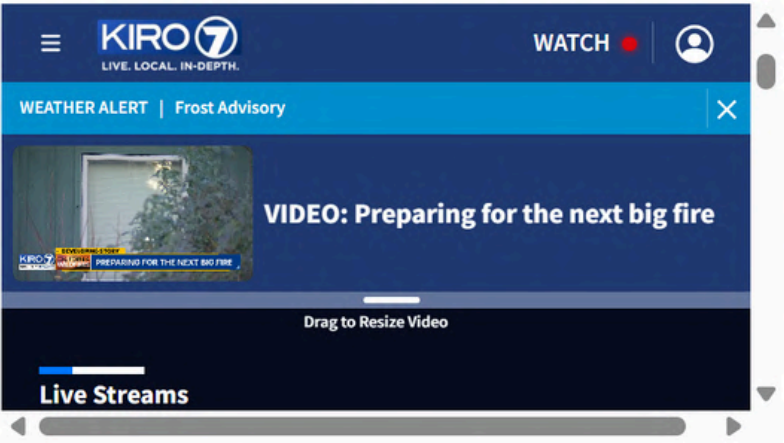
Rather than focusing on individual homes, [Firewise](#) promotes collaboration to create defensible space, eliminate fire hazards, and boost overall resilience. [Firewise](#) provides tools, resources, and expert guidance to assess risks, develop local action plans, and implement measures like fire-resistant landscaping and building upgrades. By working together, communities become safer and better prepared for wildfire events.

For more information, visit the [Firewise website](#). Or click the button below.

**CLICK HERE**

# CHANGES

## KIRO 7 NEWS: PREPARING FOR THE NEXT BIG FIRE



The KIRO 7 NEWS video discusses preparations for the next major wildfire, highlighting the increasing risks due to climate change and dry conditions. Experts emphasize the importance of community preparedness, fire mitigation strategies, and the role of emergency response teams. The report also covers preventive measures such as controlled burns and public awareness efforts to reduce wildfire damage. For more details, you can watch the full video on [KIRO 7 news](#).

## WHAT YOU CAN DO: BEST PRACTICES

- [Preparing Homes For Wildfire](#)
- [How To Be Ember Aware](#)
- 7 Ways To Reduce Risk:



## CURRENT EVENTS

Bonney Lake	Wednesday, 5/7 @ 5 p.m.	<a href="https://calendar.piercecountylibrary.org/event/13002123">https://calendar.piercecountylibrary.org/event/13002123</a>
Graham	Tuesday, 5/20 @ 5 p.m.	<a href="https://calendar.piercecountylibrary.org/event/13002163">https://calendar.piercecountylibrary.org/event/13002163</a>
Orting	Thursday, 5/22 @ 4 p.m.	<a href="https://calendar.piercecountylibrary.org/event/13002182">https://calendar.piercecountylibrary.org/event/13002182</a>
Buckley	Wednesday, 5/28 @ 5 p.m.	<a href="https://calendar.piercecountylibrary.org/event/13002419">https://calendar.piercecountylibrary.org/event/13002419</a>
Key Center	Tuesday, 6/10 @ 5 p.m.	<a href="https://calendar.piercecountylibrary.org/event/13002642">https://calendar.piercecountylibrary.org/event/13002642</a>
Eatonville	Wednesday, 6/11 @ 5 p.m.	<a href="https://calendar.piercecountylibrary.org/event/13002668">https://calendar.piercecountylibrary.org/event/13002668</a>

## OTHER RESOURCES

- [The Wildland-Urban Interface](#)
- [IBHS Wildfire Research: Why Only Half This Home Caught Fire](#)

## CONTACT US

**James Moore**

Climate Resiliency  
Program Manager  
[JamesM@pierced.org](mailto:JamesM@pierced.org)  
Phone: (253) 720-2514

# REFLECTION



- BACKGROUND RESEARCH
- PARTICIPANTS
- USABILITY TESTS

THANK  
YOU

